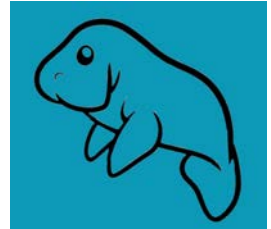


**KS3 Geography**  
Natural Disasters



NAME

---

**Suggested Time: 1 hour**

---

Please complete all questions in this paper to the best of your ability.

You should spend no more than 1 hour completing this paper.

Use the marks shown after each question ([x]) to give you an idea of how much to write for each answer. 1-mark answers do not need any explanation or much detail whereas higher-marked questions require a higher amount of detail.

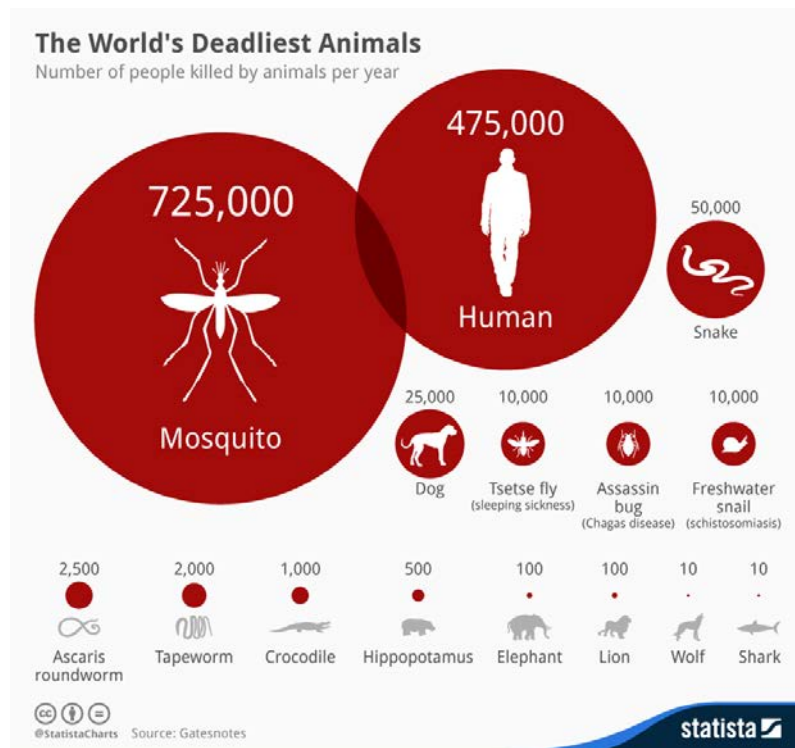
When asked to **explain**, aim to make a point or suggest an idea and then explain what that means or *why* it is a good point, in detail.

When you have completed the assessment you can use the mark scheme (sent with this paper) to find your KS3 level. Alternatively, you can answer the paper and then either scan or photo the pages and send them to me for marking at [humanateestutor@gmail.com](mailto:humanateestutor@gmail.com).

The deadline for submission of this assessment is **Friday 22nd October** and I'll be marking the papers and returning them on the 23rd October.

---

1. An infographic showing the deadliest creatures on the planet.



(a) How many people are estimated to be killed each year by dogs?

..... [1]

(b) What disease is caused by the Tsetse fly?

..... [1]

(c) Which two animals in the infographic kill the least people per year?.

.....  
..... [2]

[Total: 4]

2. Popocatepetl, Mexico



(a) Give one **primary** impact of a volcanic eruption.

..... [1]

(b) Popocatepetl is a volcano on a **destructive** plate boundary. Explain how volcanoes are formed on boundaries like this.

.....  
.....  
.....  
.....  
.....  
.....  
.....  
.....  
..... [4]

[Total: 5]

3. A photograph of a New Orleans following Hurricane Katrina.



(a) Give one alternative name for a hurricane.

..... [1]

(b) Explain **two** secondary effects of a tropical storm such as Katrina.

.....  
.....  
.....  
.....  
.....  
.....  
.....  
.....  
..... [4]

[Total: 5]

