

A Level Classical Civilisation

OCR H408

CONTENT WARNING

This course is an A Level and is therefore aimed at students of 16+.

Students who are younger than this are more than welcome, but there will be reference to adult themes from time to time, particularly graphically in the Love and Relationships unit. This course contains references to sexual assault and rape, violence, warfare and images of (ancient) nudity. I do not cover these things gratuitously but they are a core part of the course at times and feature in the textbook.

Contents	Page
Key Information	2
Component 1: The World of the Hero	3
Component 2: Invention of the Barbarian	4
Component 3: Love and Relationships	5
Examination	6
Assessments & Homework	7
How Lessons Work	8
Holidays & Taking Breaks	9
Textbooks	10

Key Information

Course Price	£1,230 divided over 22 months at £55, + £20 deposit
Course Length	22 Months over 74 Lessons
Lesson Length	1 hour 30 minutes
Lesson Times	Wednesdays 2-3:30
Exam Board	OCR
Qualification	A Level
Course Code	H408
Exams	3 Papers. 1 of 2hrs 20mins, 2 of 1hr 45mins



Component 1: The World of the Hero

Our first unit of study will be the compulsory unit on the World of the Hero. In this unit we will study Homer's *The Odyssey* and Virgil's *Aeneid*.

We will explore the way in which our heroes (Odysseus and Aeneas) are portrayed and differing interpretations of them. The examination on the section will first focus on the works individually and then on comparing the two.

You will need to read and be familiar with the entire *Odyssey* and *Aeneid*.



Component 2: Invention of the Barbarian

This component allows learners to explore how the Greeks saw themselves as distinct from their 'barbarian' neighbours. With issues of race and stereotypes so prevalent in the modern world, this component raises matters which will resonate with learners and encourage them to think about their own society and beliefs.

The first topic introduces the learner to the Greek world and asks how united the Greeks were as a people. The second explores the possible lack of cohesion of the Greeks during the events of the Persian Wars. Learners will then look into how the image of the barbarian as being distinct from, and inferior to, the Greeks emerged and persisted.

In the innovative topic focusing on the reality of Persian culture, learners will analyse how far the Greek stereotype of the Persians was based on fact or prejudice. They will be encouraged to question assumptions and think critically about portrayals of difference and identity.

Finally, learners will examine depictions of the Persians in the work of Herodotus and Aeschylus, and the idea of barbarians in Greek myth, including why the Greeks were fascinated by female barbarians in particular. This close analysis of literary and artistic sources gives learners the opportunity to work with a variety of material, creating an engaging course of study.

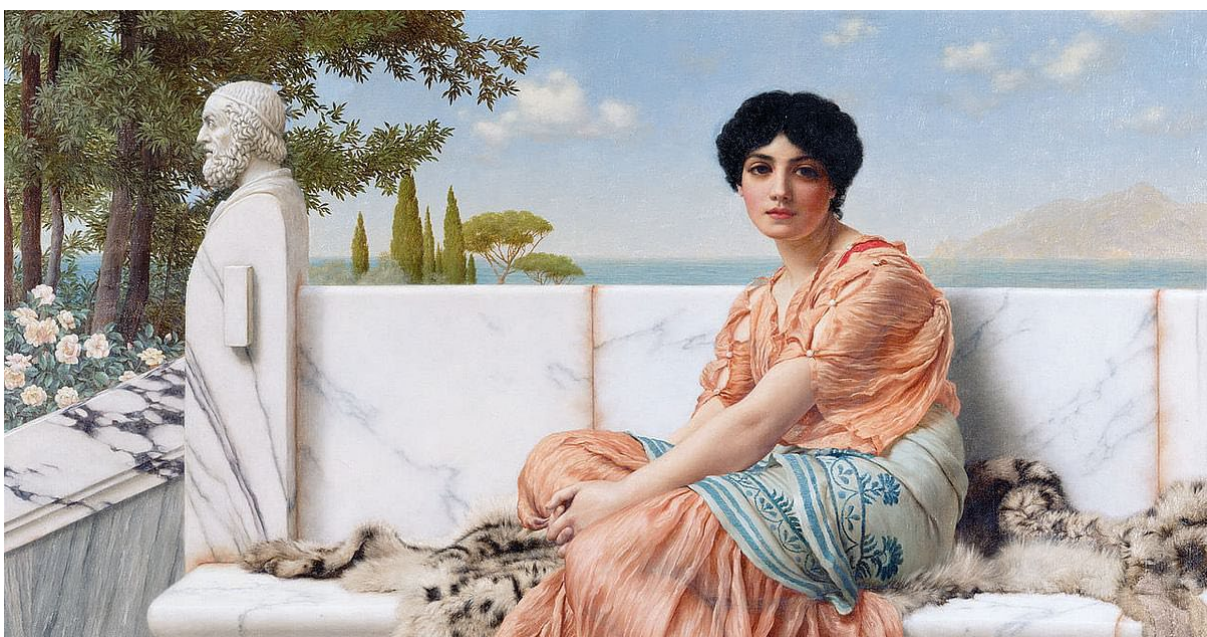


Component 3: Love and Relationships

Ideas about love and relationships are key aspects of the literature, thoughts, and ethics of any society. This component offers the opportunity for learners to recognise and relate to the passions, frustrations and delights of love in the ancient world. The ethical questions raised by these ideas continue to be wrestled over by successive generations and this unit will generate interesting and important discussions about love, desire, sex, sexuality and the institution of marriage.

Ancient ideas about men, women and marriage enable learners to discuss the reality of love and relationships in everyday life, whilst study of Seneca and Plato provides a more conceptual approach. Throughout this material learners will be able to draw comparisons and make judgements about ideal and reality, and the nature of 'right' and 'wrong' ways to love or be loved.

The study of poetry forms the second half of the unit. Sappho provides a link between the Homeric poems and the literature of 5th and 4th century Athens. She is one of very few female voices from the ancient world; the context of her life is fascinating, and her verse is powerful and evocative. Ovid offers a lighter presentation of relationships and concentrates on the fun and flirtation of budding romances.



Examination Information

1 exam of 2 hours 20 minutes.

2 exam papers of 1 hour 45 minutes each.

All exams will be in 2026.

There will be a range of partial and full mock exams throughout the course. We take mock exams in lessons which will be recorded in case we need evidence of work due to any exam complications in 2024.

I mark all exams and provide feedback. We will study all the required exam skills in class and most homework will be based on exam questions.

Exams are readily available across the county at independent exam centres such as A3, Faregos and Tutors & Exams. I am partnered with Tutors & Exams but this does not mean you must take the exam with them.

The deadline for exam entries is usually around the end of January. I suggest that you sign up before then to avoid any delays, especially if you require access arrangements due to any special needs (extra time, use of a laptop etc.)

I **cannot** sign up to exam for you, but I can offer help and advice. It is also not me who can decide if a student requires extra time etc; that's something you must arrange with the exam centre you choose to sit the exam with.

You can find examples of exam papers on the OCR website.

Assessment and Homework

In order to track student's progress, I ask them to complete regular homework and mock exam assessments.

Homework will be set every week and will usually be based on exam questions so that they can be marked and graded.

All students must have access to a printer to print off homework and exam papers.

All students must have a way of sending me completed homework. You can either photograph this and send it or scan it in. (If you have completed work on the computer than this is a simple email).

It is much appreciated if work can be sent in .pdf form as this drastically cuts down the time it takes to mark.

All homework will be returned, marked, within two days of being sent unless we are taking a holiday. Most homework is sent back the next day.

Drop-In

If a student requires help with homework, or anything else, they can email me at any time or join my drop-in session every **Saturday from 11-12pm**.

This session is open to all students and their parents for free and you can ask me anything!

Reports

I send out written reports each November to give parents and students a good idea of how they are progressing. This report will show how regularly homework is completed, attendance and average grades so far.

How Lessons Work

All lessons are online and use the Zoom platform. Students will have a link that they can use for the entire year.

All lessons are recorded so should you miss a lesson, you can catch up. These are all stored on a central Google Drive. These are also great for revision!

Students are not always required to use cameras or mics, although they are strongly encouraged to do so as it is a small group in which discussion of key themes really helps to build understanding. The exception to this is during mock exams when all students are expected to have a camera pointing at their work, not faces and must have their mics muted.

Students will be able to use the Zoom chat function during lessons if they are uncomfortable with speaking.

Equipment you will need:

- Camera
- Mic
- Stable internet connection
- Notepads and pens for notetaking
- Working printer for printing off assessments etc.

Holidays and Taking Breaks

This course follows the **Nottinghamshire** school term times (attached to the end of this document). This means that we will have a long break for Summer, half terms and Christmas and Easter holidays.

The price of the course has been split over the length of the course, so even when in holiday times, the monthly cost is the same even though there may be less lessons in that particular month.

As all lessons are recorded, it's no problem at all to take additional weeks off. Please be prepared to catch up with missed lessons though by watching recordings and doing any homework set.

If you cannot make a mock exam for any reason, please send me an email. We can usually work out an alternative time to sit these exams.

Textbooks

There are three required textbooks for this course:

OCR Classical Civilisation AS and A Level Component 11:

The World of the Hero
(ISBN: 978-1350015074)

OCR Classical Civilisation A Level Components 23 and 24:

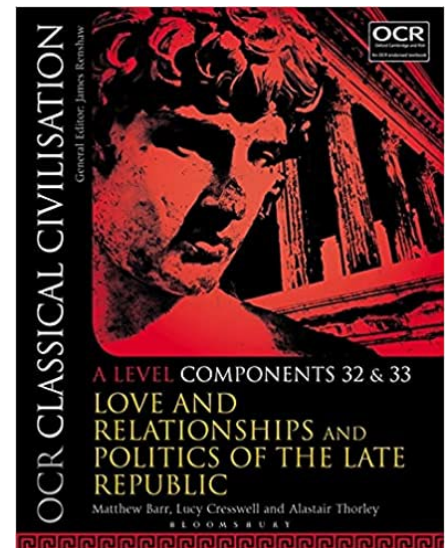
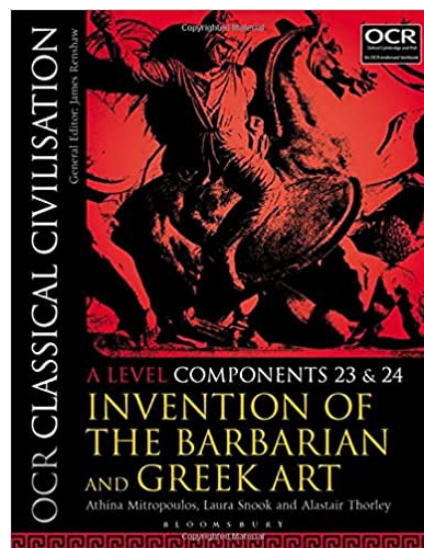
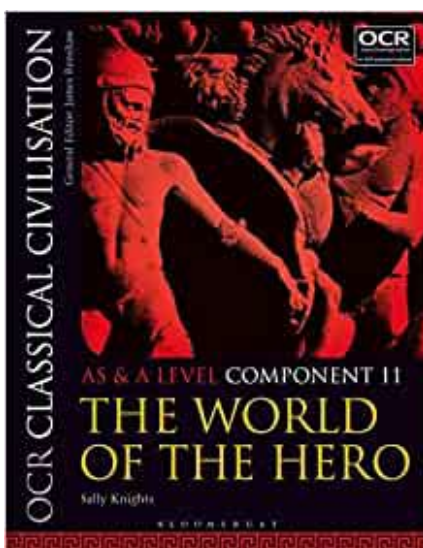
Invention of the Barbarian and Greek Art
(ISBN: 978-1350020955)

OCR Classical Civilisation A Level Components 32 and 33:

Love and Relationships and Politics of the Late Republic
(ISBN: 978-1350021037)

You will also need access to the Prescribed Sources for each of our three units. These can be found on the OCR website. You can either print them out or use the online versions.

<https://ocr.org.uk/qualifications/as-and-a-level/classical-civilisation-h008-h408-from-2017/planning-and-teaching/>



Nottingham City Council School Terms and Holidays Calendar - 2024/25

Aug-24						
M		5	12	19	26	
T		6	13	20	27	
W		7	14	21	28	
T	1	8	15	22	29	
F	2	9	16	23	30	
S	3	10	17	24	31	
S	4	11	18	25		

Sep-24						
M		2	9	16	23	30
T		3	10	17	24	
W		4	11	18	25	
T		5	12	19	26	
F		6	13	20	27	
S		7	14	21	28	
S	1	8	15	22	29	

Oct-24						
M		7	14	21	28	
T	1	8	15	22	29	
W	2	9	16	23	30	
T	3	10	17	24	31	
F	4	11	18	25		
S	5	12	19	26		
S	6	13	20	27		

Nov-24						
M		4	11	18	25	
T		5	12	19	26	
W		6	13	20	27	
T		7	14	21	28	
F	1	8	15	22	29	
S	2	9	16	23	30	
S	3	10	17	24		

Dec-24						
M		2	9	16	23	30
T		3	10	17	24	31
W		4	11	18	25	
T		5	12	19	26	
F		6	13	20	27	
S		7	14	21	28	
S	1	8	15	22	29	

Jan-25						
M		6	13	20	27	
T		7	14	21	28	
W	1	8	15	22	29	
T	2	9	16	23	30	
F	3	10	17	24	31	
S	4	11	18	25		
S	5	12	19	26		

Feb-25						
M		3	10	17	24	
T		4	11	18	25	
W		5	12	19	26	
T		6	13	20	27	
F		7	14	21	28	
S	1	8	15	22		
S	2	9	16	23		

Mar-25						
M		3	10	17	24	31
T		4	11	18	25	
W		5	12	19	26	
T		6	13	20	27	
F		7	14	21	28	
S	1	8	15	22	29	
S	2	9	16	23	30	

Apr-25						
M		7	14	21	28	
T	1	8	15	22	29	
W	2	9	16	23	30	
T	3	10	17	24		
F	4	11	18	25		
S	5	12	19	26		
S	6	13	20	27		

May-25						
M		5	12	19	26	
T		6	13	20	27	
W		7	14	21	28	
T	1	8	15	22	29	
F	2	9	16	23	30	
S	3	10	17	24	31	
S	4	11	18	25		

Jun-25						
M		2	9	16	23	30
T		3	10	17	24	
W		4	11	18	25	
T		5	12	19	26	
F		6	13	20	27	
S		7	14	21	28	
S	1	8	15	22	29	

Jul-25						
M		7	14	21	28	
T	1	8	15	22	29	
W	2	9	16	23	30	
T	3	10	17	24	31	
F	4	11	18	25		
S	5	12	19	26		
S	6	13	20	27		



Inset Days



Bank Holiday



School Holiday

Half term 1 - 7 weeks 2 days

Half term 2 - 7 weeks

Half term 3 - 6 weeks

Half term 4 - 6 weeks

Half term 5 - 4 weeks 3 days

Half term 6 - 8 weeks

Nottingham City Council School terms and holiday calendar – 2025/26

AUGUST 2025						
M		4	11	18	25	
T		5	12	19	26	
W		6	13	20	27	
T		7	14	21	28	
F	1	8	15	22	29	
S	2	9	16	23	30	
S	3	10	17	24	31	

SEPTEMBER 2025						
M	1	8	15	22	29	
T	2	9	16	23	30	
W	3	10	17	24		
T	4	11	18	25		
F	5	12	19	26		
S	6	13	20	27		
S	7	14	21	28		

OCTOBER 2025						
M		6	13	20	27	
T		7	14	21	28	
W	1	8	15	22	29	
T	2	9	16	23	30	
F	3	10	17	24	31	
S	4	11	18	25		
S	5	12	19	26		

NOVEMBER 2025						
M		3	10	17	24	
T		4	11	18	25	
W		5	12	19	26	
T		6	13	20	27	
F		7	14	21	28	
S	1	8	15	22	29	
S	2	9	16	23	30	

DECEMBER 2025						
M	1	8	15	22	29	
T	2	9	16	23	30	
W	3	10	17	24	31	
T	4	11	18	25		
F	5	12	19	26		
S	6	13	20	27		
S	7	14	21	28		

JANUARY 2026						
M		5	12	19	26	
T		6	13	20	27	
W		7	14	21	28	
T	1	8	15	22	29	
F	2	9	16	23	30	
S	3	10	17	24	31	
S	4	11	18	25		

FEBRUARY 2026						
M		2	9	16	23	
T		3	10	17	24	
W		4	11	18	25	
T		5	12	19	26	
F		6	13	20	27	
S		7	14	21	28	
S	1	8	15	22		

MARCH 2026						
M		2	9	16	23	30
T		3	10	17	24	31
W		4	11	18	25	
T		5	12	19	26	
F		6	13	20	27	
S		7	14	21	28	
S	1	8	15	22	29	

APRIL 2026						
M		6	13	20	27	
T		7	14	21	28	
W	1	8	15	22	29	
T	2	9	16	23	30	
F	3	10	17	24		
S	4	11	18	25		
S	5	12	19	26		

MAY 2026						
M		4	11	18	25	
T		5	12	19	26	
W		6	13	20	27	
T		7	14	21	28	
F	1	8	15	22	29	
S	2	9	16	23	30	
S	3	10	17	24	31	

JUNE 2026						
M	1	8	15	22	29	
T	2	9	16	23	30	
W	3	10	17	24		
T	4	11	18	25		
F	5	12	19	26		
S	6	13	20	27		
S	7	14	21	28		

JULY 2026						
M		6	13	20	27	
T		7	14	21	28	
W	1	8	15	22	29	
T	2	9	16	23	30	
F	3	10	17	24	31	
S	4	11	18	25		
S	5	12	19	26		

Key	
	In school
	School holiday
	Public holiday
	In Service Training Day

AUGUST 2026						
M		3	10	17	24	31
T		4	11	18	25	
W		5	12	19	26	
T		6	13	20	27	
F		7	14	21	28	
S	1	8	15	22	29	
S	2	9	16	23	30	

*Recommend that July 27 be used as INSET Day (school's decision)

Half term 1 – 7 weeks

Half term 2 – 7 weeks

Half term 3 – 6 weeks

Half term 4 – 5 weeks

Half term 5 – 5 weeks 4 days

Half term 6 – 8 weeks 1 day